



## 101/2-6 Martin Avenue Arncliffe NSW

1 1 1

Set within the modern and architecturally designed "Neo" complex, this beautifully appointed 1-bedroom plus study apartment delivers the perfect blend of luxury, comfort, and convenience. Positioned on the first level, it offers a private and sophisticated living environment, ideal for professionals, couples, or investors seeking style and functionality.

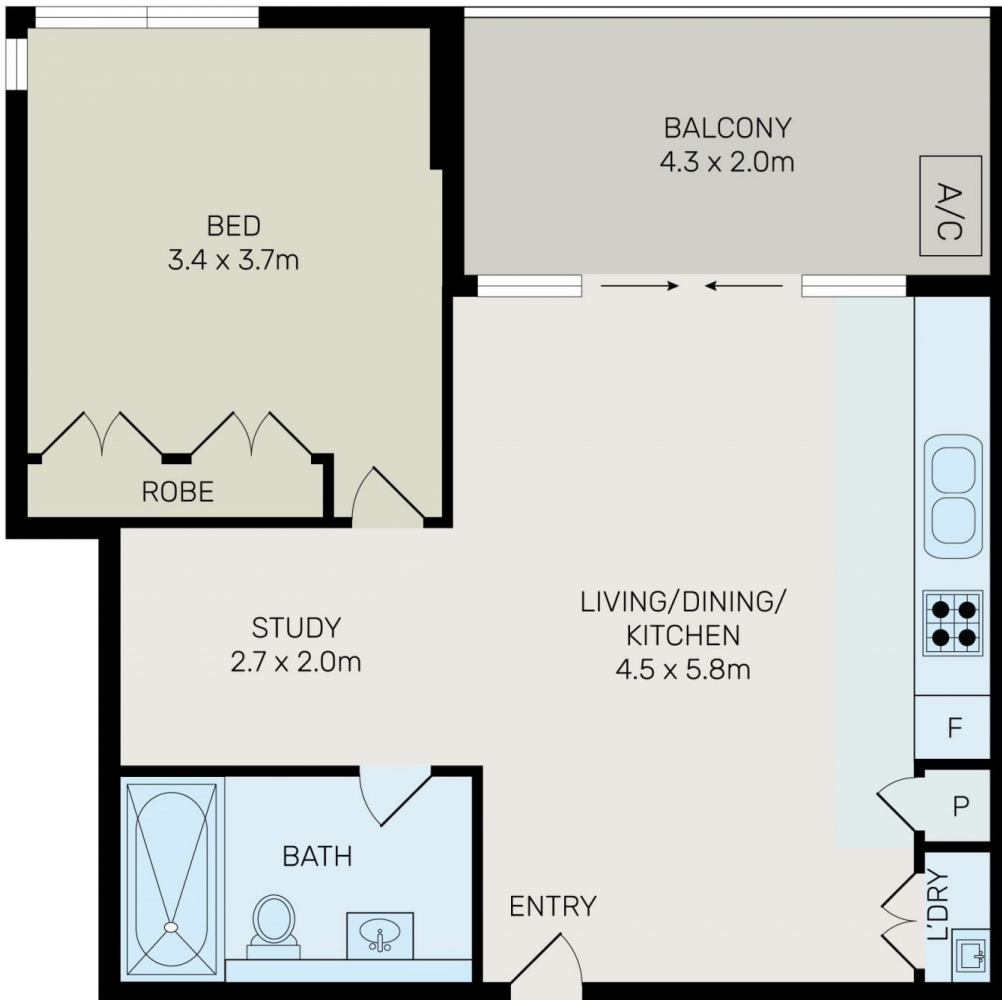
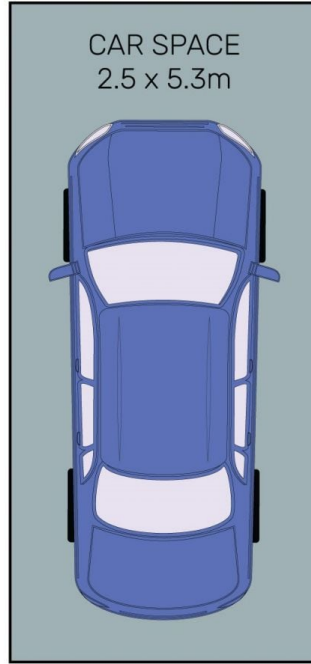
Located just 10km from Sydney's CBD, you're perfectly positioned to enjoy the best of urban living. Surrounded by local cafés, restaurants, and shops, and just a short stroll to Arncliffe, Turrella, and Wollie Creek train stations, this address offers unmatched connectivity. With easy access to the M5, Sydney Airport, and key transport links, this is a

[For full version visit the website](https://www.onespaceproperty.com.au)

**Type** : Apartment  
**Building Size** : 84 sqm  
**View** : <https://www.onespaceproperty.com.au/sale/nsw/st-george/arncliffe/residential/apartment/8419211>



**John (junjie) Zhu**  
0292678810



All information contained herein is gathered from all sources we believe to be reliable. However we cannot guarantee its accuracy and interested parties should rely on their own enquiries.



101/2-6 Martin Avenue, Arncliffe