



215/791-795 Botany Road Rosebery NSW

2 2 1

Quietly positioned at the rear of Rosebery's iconic 'The Loom' complex, this bespoke apartment offers a seamless blend of modern luxury, architectural excellence, and urban convenience. Designed by the award-winning team at Candalepas Associates, this residence captures an abundance of natural light with its prized northerly aspect and dual balconies, creating the perfect space for relaxed living and year-round entertaining.

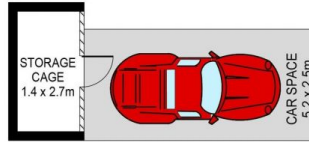
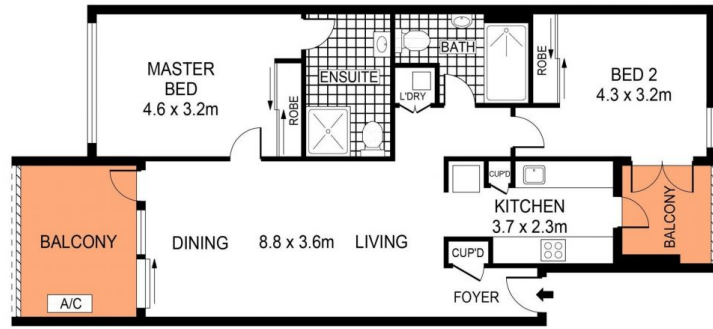
Situated in the heart of Rosebery's thriving culinary precinct, you'll be just footsteps from The Cannery, Three Blue Ducks, Gelato Messina, and the Green Square precinct, with rapid access to the CBD, airport, and eastern beaches.

[For full version visit the website](https://www.onespaceproperty.com.au)

Type : Apartment
Land Size : 96 sqm
View : <https://www.onespaceproperty.com.au/lease/nsw/eastern-suburbs/rosebery/residential/apartment/8438589>



Charles (lei) Cheng
0292678810



0 1 2 3 4 5 SCALE (METRES)

PLANS SHOWN ONLY INDICATIVE OF LAYOUT. DIMENSIONS ARE APPROXIMATE.
Ref. No: 85294

LEVEL 2

215/791-795 BOTANY ROAD

ROSEBERY