

**408/23 Monza Boulevard Wentworth Point NSW**

1 🛏 1 🚿 1 🚗

Art Deco Charm with Waterside Lifestyle

Discover a home that blends Art Deco elegance with modern convenience in one of Sydney's fastest-growing waterfront suburbs. With 120sqm of total space, this north-facing residence is designed to capture natural light while offering an enviable connection to nature and the water.

Property Features:

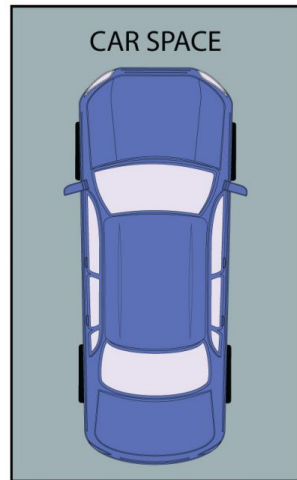
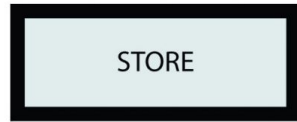
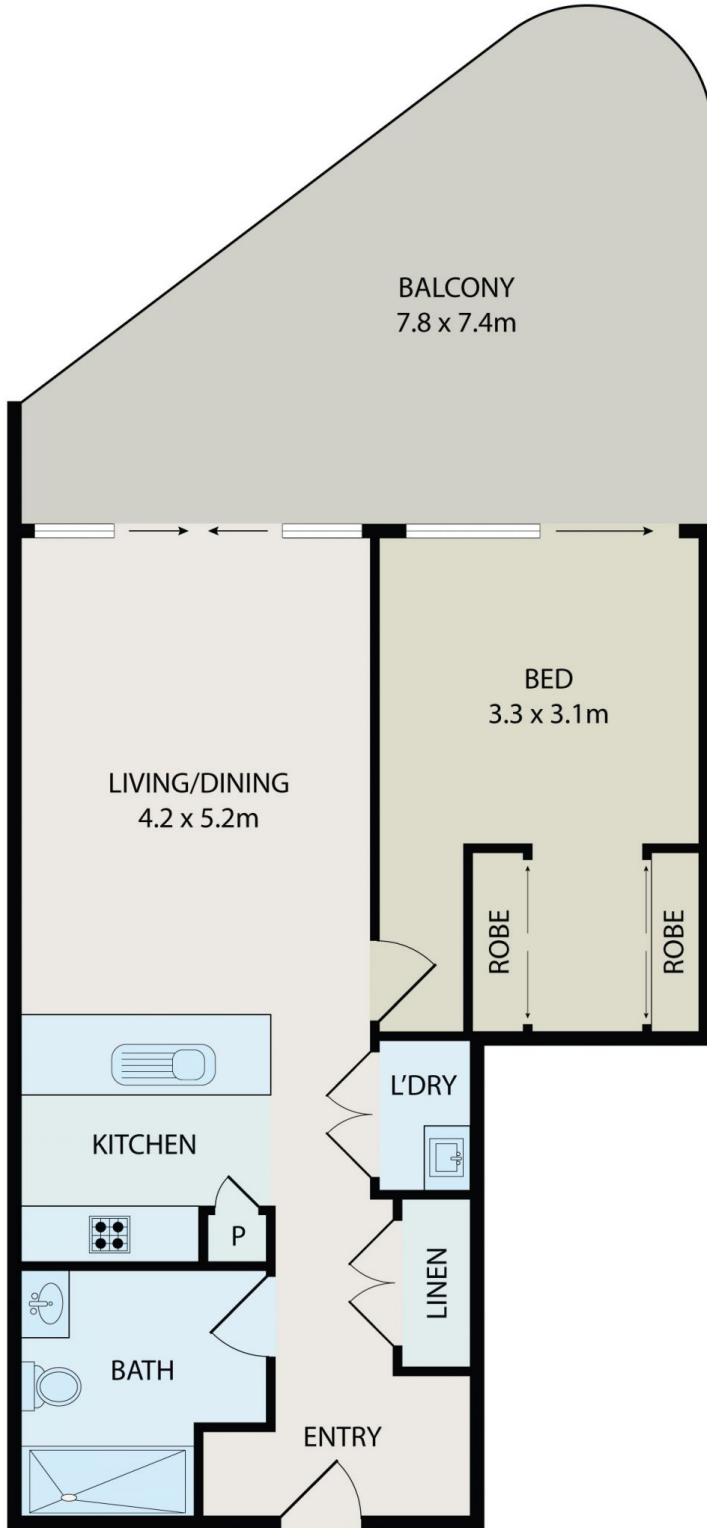
- ? Art Deco Inspired Home - rare architectural character that stands out from the rest
- ? Generous 120sqm total area - spacious interiors with seamless indoor-outdoor flow & hybrid timber look floating

[For full version visit the website](https://www.onespaceproperty.com.au)

**Type** : Apartment  
**Building Size** : 120 sqm  
**View** : <https://www.onespaceproperty.com.au/sale/nsw/inner-west/wentworth-point/residential/apartment/8471189>



**Jeff (kwok Fu) Chau**  
**0292678810**



All information contained herein is gathered from all sources we believe to be reliable. However we cannot guarantee its accuracy and interested parties should rely on their own enquiries.



**408/23 Monza Boulevard, Wentworth Point**