



1006/43 Shoreline Drive Rhodes NSW

1 1 1

Flooded with natural light and designed for effortless flow, this north-facing residence captures the essence of comfort and style. Perched on the ninth floor of the prestigious "Phoenix" complex, it frames uninterrupted water vistas that create a truly serene backdrop to everyday living.

Blending contemporary elegance with unrivalled convenience, it's just a short stroll to Rhodes Central Shopping Centre, train station, Bennelong Bridge, the scenic waterfront, and a vibrant selection of cafés and restaurants - offering a lifestyle of leisure and connectivity that's second to none.

YOU'LL JUST LOVE

[For full version visit the website](#)

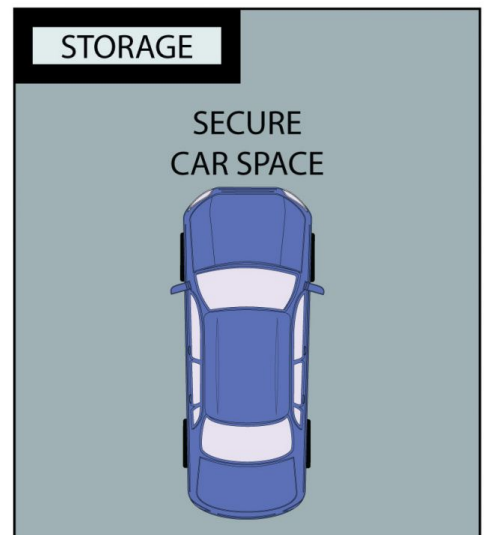
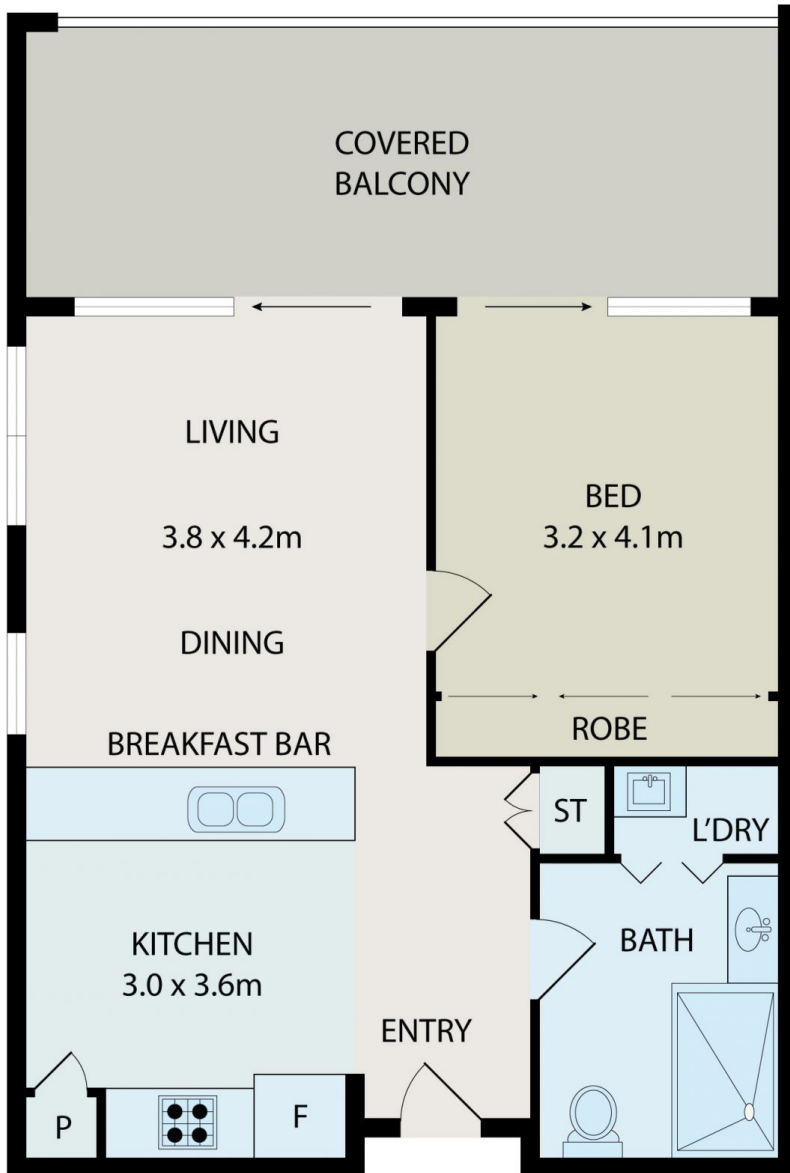
Type : Apartment

Price : \$ 798,000

View : <https://www.onespaceproperty.com.au/sale/nsw/inner-west/rhodes/residential/apartment/8504751>



John (junjie) Zhu
0292678810



All information contained herein is gathered from all sources we believe to be reliable. However we cannot guarantee its accuracy and interested parties should rely on their own enquiries.



1006/43 Shoreline Drive, Rhodes