



407/8 Ebsworth Street Zetland NSW

3 2 1

Experience refined urban living in this stunning three-bedroom apartment, perfectly positioned on Level 4 of the iconic OVO Tower by Mirvac-an architectural masterpiece designed by the award-winning FJMT Studio. Offering a seamless blend of luxury, comfort, and convenience, this residence captures the essence of modern city living in the heart of Green Square.

Type : Apartment

View : <https://www.onespaceproperty.com.au/lease/nsw/eastern-suburbs/zetland/residential/apartment/8536346>

Apartment Highlights

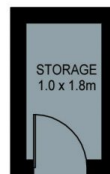
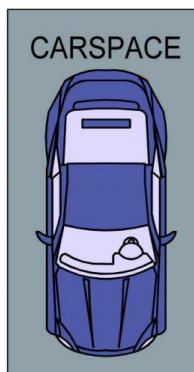
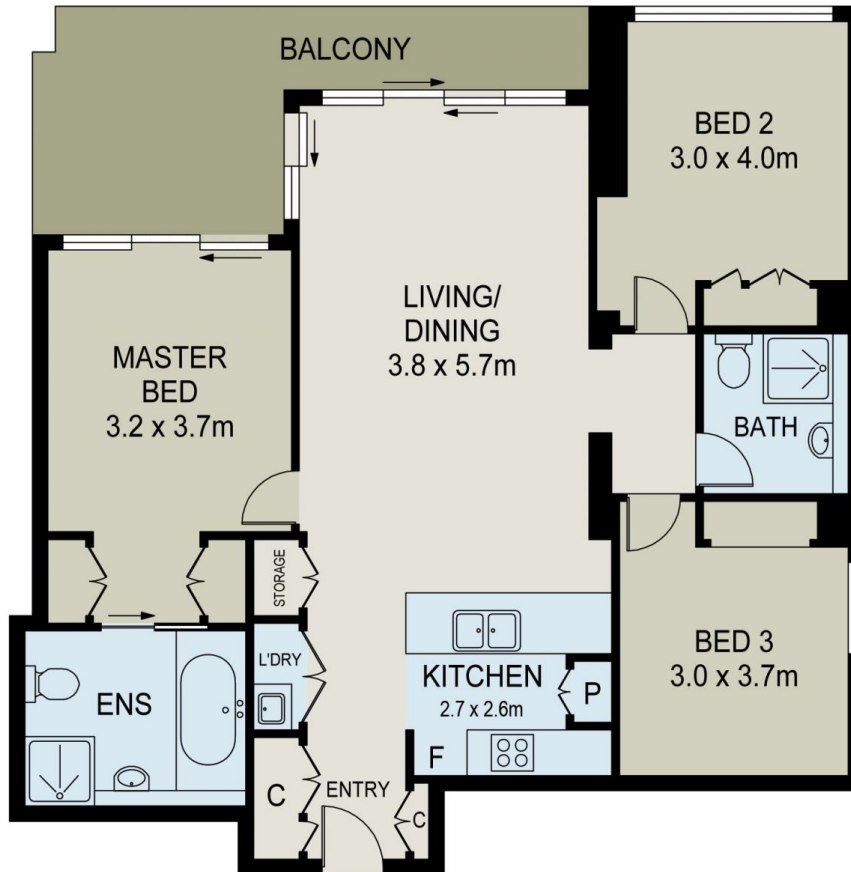
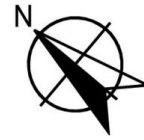
? Sun-drenched North-East aspect with floor-to-ceiling windows and high ceilings

? Open-plan living and dining area flowing onto a covered

[For full version visit the website](#)



Charles (lei) Cheng
0292678810



Scale in metres. Indicative only. Dimensions are approximate. All information contained herein is gathered from sources we believe to be reliable. However we cannot guarantee its accuracy and interested persons should rely on their own enquiries

407/8 Ebsworth Street, Zetland