

307/1 Wattle Crescent Pyrmont NSW

2 2 1

Experience the ultimate in inner-city sophistication with this architecturally designed, two-level, two-bedroom apartment in the prestigious Pier 99 building. Meticulously styled and fully furnished with high-end finishes, this residence offers a rare blend of luxury, comfort, and convenience.

Type : Apartment

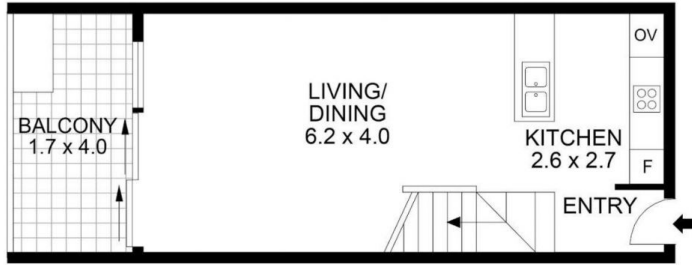
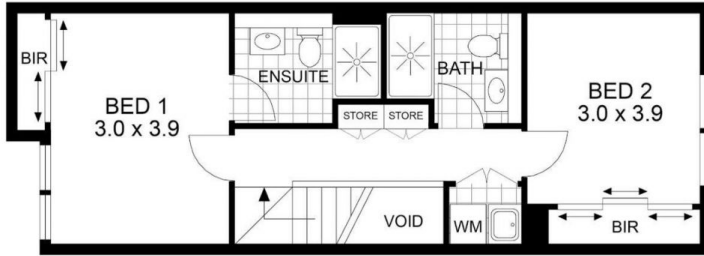
View : <https://www.onespaceproperty.com.au/lease/nsw/sydney-city/pyrmont/residential/apartment/8538513>

Perfectly positioned just moments from the Sydney Fish Markets, Harbour foreshore, light rail, and Pyrmont's vibrant café and dining scene, this home delivers an exceptional lifestyle within walking distance of the CBD.

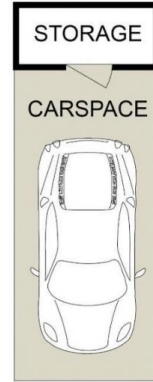
Features include:

? Luxury furnished and interior-styled throughout

[For full version visit the website](#)



LEVEL 3



Disclaimer: Drawing not to scale. Please note that while the information contained in this floorplan is provided by reliable sources, we cannot guarantee its accuracy. It is intended as a guide. Interested parties should rely on their own enquiry.

307/1 Wattle Crescent, Pyrmont