



## 251/420 Pitt Street Sydney NSW

3  2  1 

Perched on Level 25 of the renowned Mosaic Building, this beautifully appointed three-bedroom apartment offers a spacious layout, quality finishes, and sweeping city views. Designed for modern living, it combines comfort, style, and unbeatable CBD convenience.

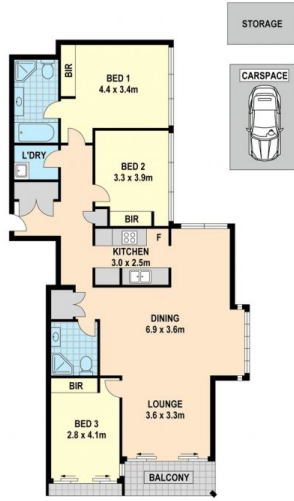
**Type** : Apartment

**View** : <https://www.onespaceproperty.com.au/lease/nsw/sydney-city/sydney/residential/apartment/8538550>

Enjoy unbeatable convenience with Darling Harbour, Chinatown, Cockle Bay, Town Hall, and Central Station all within walking distance. Surrounded by cafes, restaurants, shops, and transport options, this apartment offers the perfect blend of comfort and CBD lifestyle.

Apartment Features:

[For full version visit the website](https://www.onespaceproperty.com.au)



Scale in metres indicated only. Dimensions are approximate. All information contained herein is gathered from sources we believe to be reliable. We cannot guarantee its accuracy and interested persons should rely on their own enquiries.

251/420 Pitt Street Sydney

