



725/1 Kingfisher Street Lidcombe NSW

2 2 1

Nestled on the 7th floor of the illustrious "Ruby" building, this exquisite North facing two-bedroom apartment captures sweeping leafy district panoramas and Sydney Olympic Park vistas, exuding refined luxury through its premium finishes and elegant interiors. A perfect choice for first-home buyers and savvy investors alike, it delivers spacious, light-filled living areas that balance modern sophistication with everyday comfort, ensuring an exceptional lifestyle and strong rental appeal.

Perfectly positioned in one of Wentworth Point's most vibrant precincts near Sydney Olympic Park, enjoy unparalleled access to sporting arenas, lush parklands, fine dining, cafés, boutique shops, and public transport, all

[For full version visit the website](https://www.onespaceproperty.com.au)

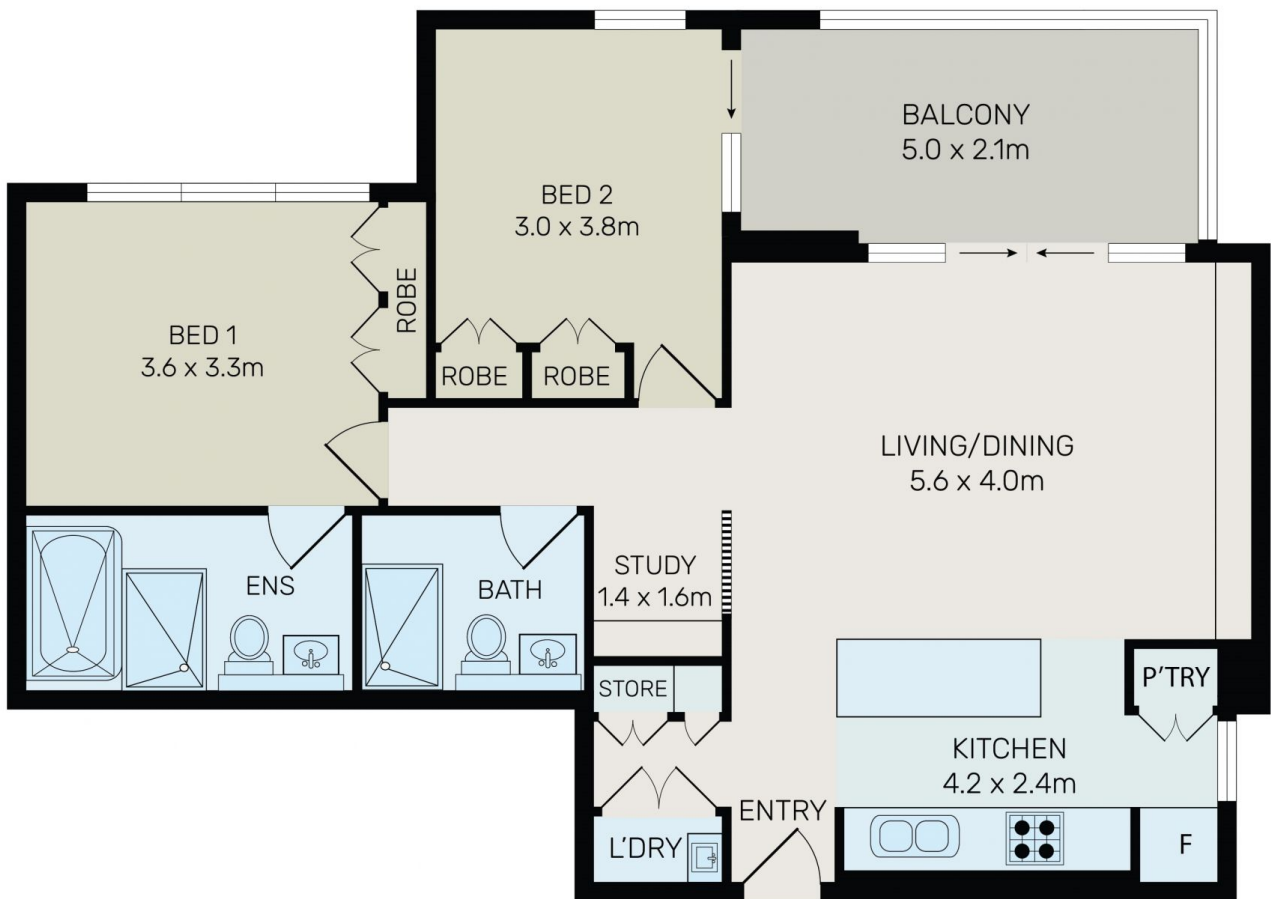
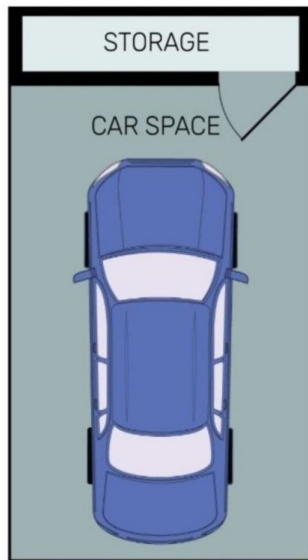
Type : Apartment
Price : \$ 755,000
Building Size : 110 sqm
View : <https://www.onespaceproperty.com.au/sale/nsw/parramatta/lidcombe/residential/apartment/8548421>



John (junjie) Zhu
0292678810



Jeff (kwok Fu) Chau
0292678810



All information contained herein is gathered from all sources we believe to be reliable. However we cannot guarantee its accuracy and interested parties should rely on their own enquiries.



725/1 Kingfisher Street, Lidcombe