



106/6 Bidjigal Road Arncliffe NSW

2 2 1

This upscale two-bedroom apartment in the contemporary "Serenity" complex in Arncliffe offers a luxurious and modern living experience. Positioned on the first level, the apartment features sophisticated interiors and a well-designed layout, setting a high benchmark for comfort and style.

Residents enjoy exclusive access to resort-style facilities, including a swimming pool, fully equipped gymnasium, and a children's playground-perfect for relaxed, low-maintenance living.

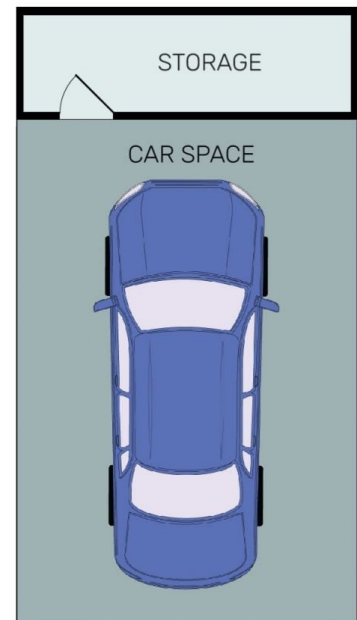
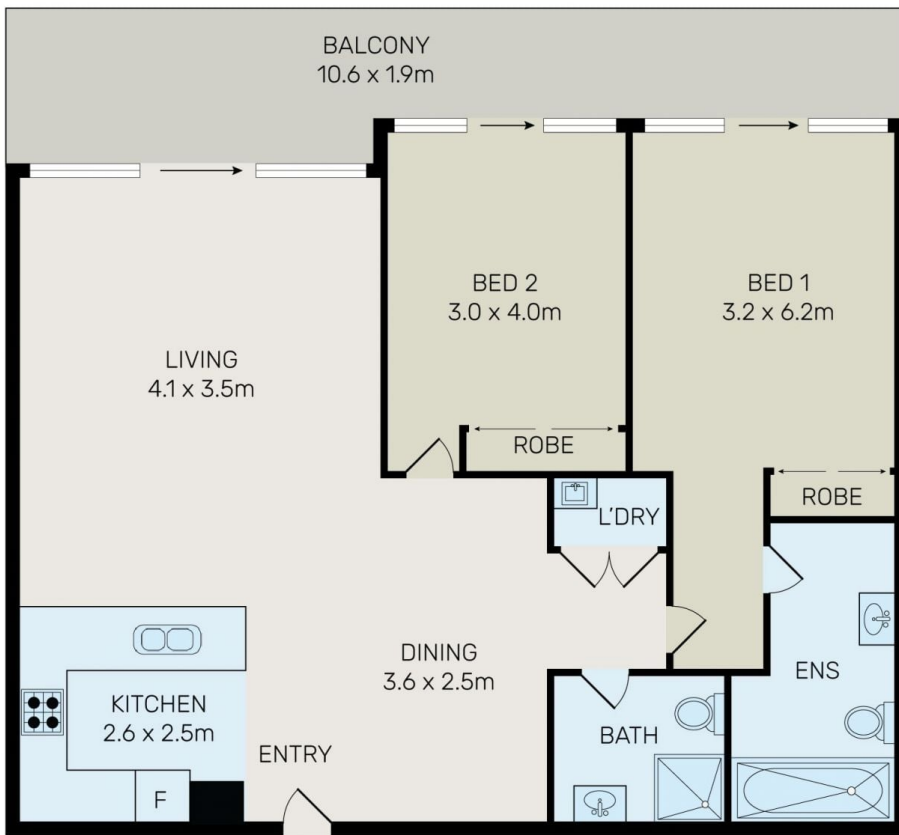
Ideally located just 10 kilometres from Sydney CBD, the property provides easy access to local shops, cafés,

[For full version visit the website](https://www.onespaceproperty.com.au)

Type : Apartment
Building Size : 116 sqm
View : <https://www.onespaceproperty.com.au/ease/nsw/st-george/arncliffe/residential/apartment/8587871>



Charles (lei) Cheng
0292678810



All information contained herein is gathered from all sources we believe to be reliable. However we cannot guarantee its accuracy and interested parties should rely on their own enquiries.



106/6 Bidjigal Road, Arncliffe