

## 2003/46 Savona Drive Wentworth Point NSW

2 2 1

Perfectly positioned between Sydney harbour, foreshore and the surrounding parklands. Easy access to the CBD - 35 minute Ferry ride to the City, 25 minute train ride to City via Rhodes Station located 10 minute walk, over the walk bridge.

### APARTMENT FEATURES:

- Modern, open plan layout living/dining area access to balcony
- Timber floor throughout
- Kitchen, cooktop and oven, stainless steel microwave and integrated dishwasher
- 2 bedrooms both with built-in robes
- Master bedroom with en-suite

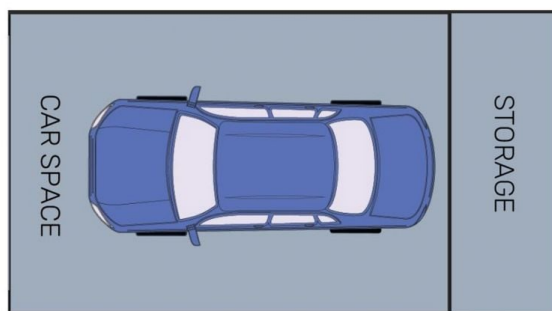
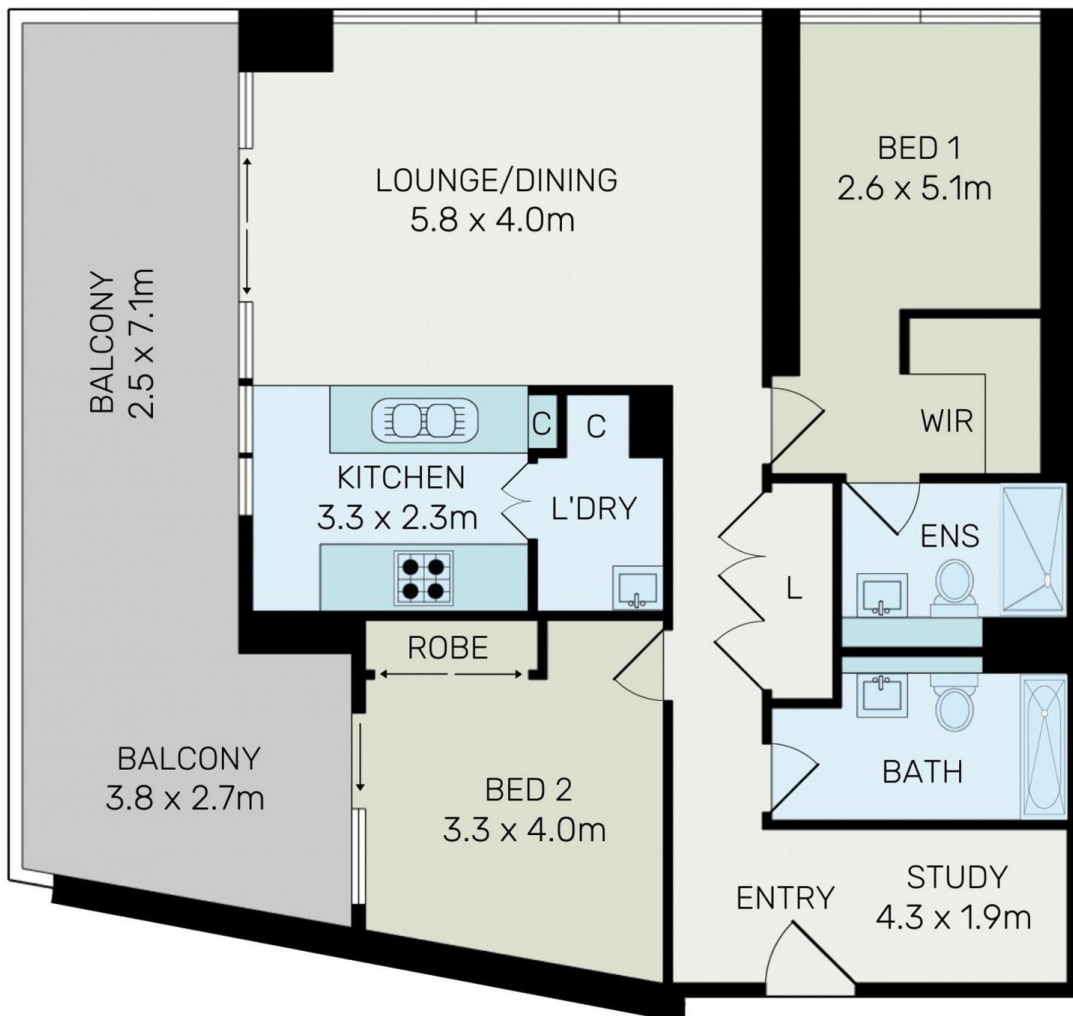
[For full version visit the website](https://www.onespaceproperty.com.au)

**Type** : Apartment

**View** : <https://www.onespaceproperty.com.au/lease/nsw/inner-west/wentworth-point/residential/apartment/8587938>



**Sharon (si) Shen**  
0292678810



All information contained herein is gathered from all sources we believed to be reliable. However we cannot guarantee its accuracy and interested parties should rely on their own inquiries.

# 2003/46 Savona Drive, Wentworth Point