



306/3 Eve Street Erskineville NSW

2 2 1

Positioned on Level 3 of the acclaimed "LUXE On Eve" residence by renowned architects Smith & Tzannes, this beautifully crafted two-bedroom apartment delivers the perfect balance of urban sophistication and peaceful everyday living.

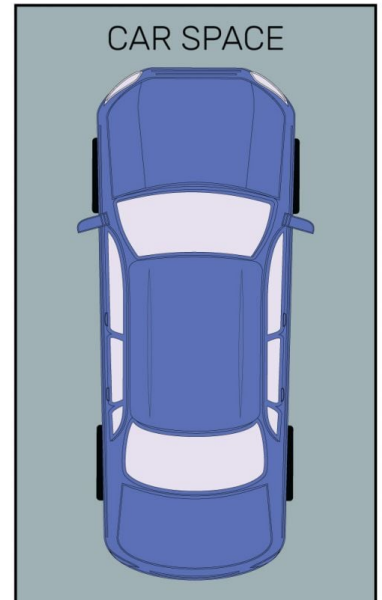
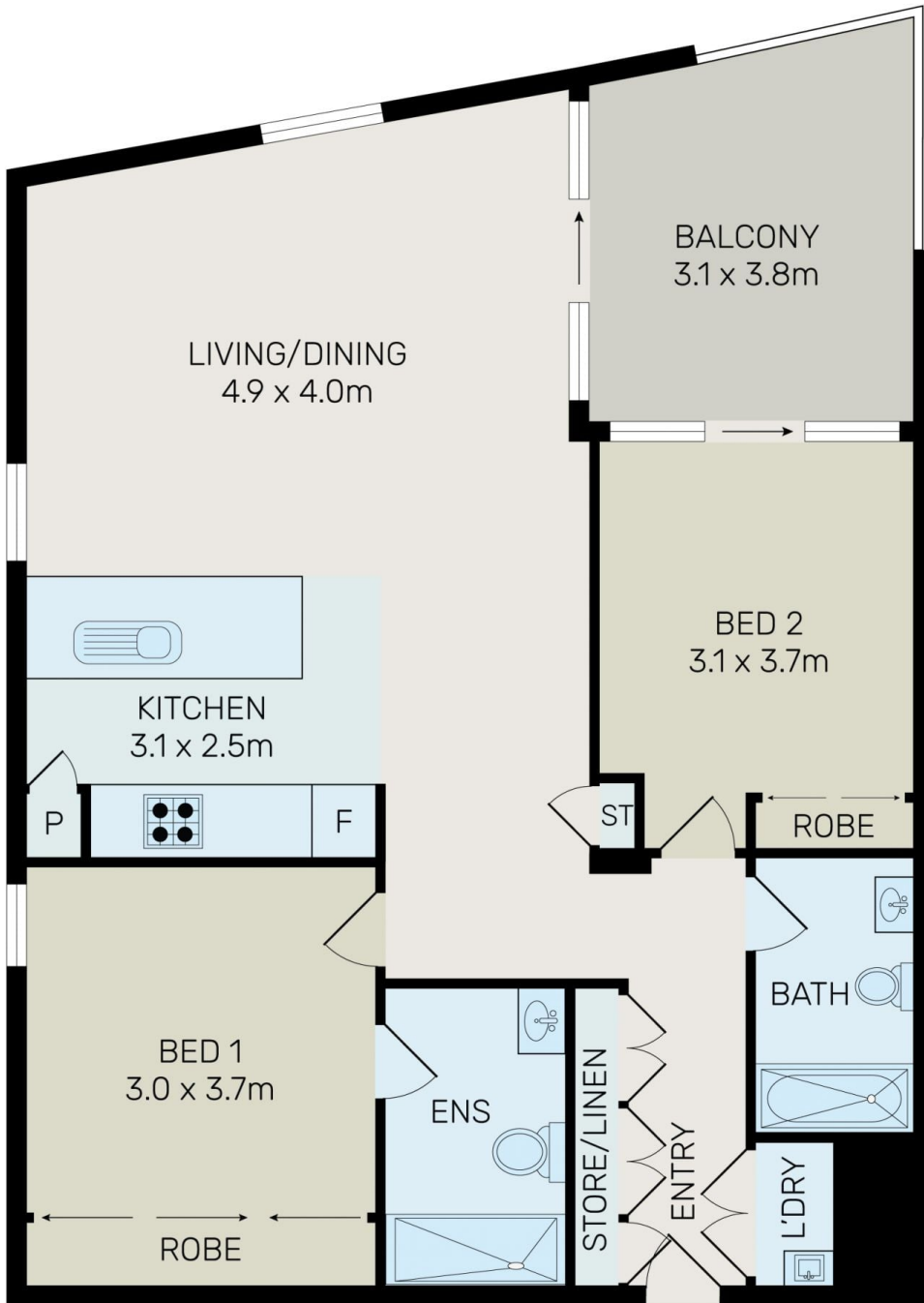
Enjoy an unbeatable lifestyle setting with Erskineville Station and the greenery of Sydney Park just moments away, while the vibrant cafés, bars and restaurants of Newtown are all within easy walking distance. A rare opportunity to secure a home of exceptional design and lifestyle appeal in one of the Inner West's most sought-after pockets.

Type : Apartment
Price : \$ 1,130,000
Building Size : 99 sqm
View : <https://www.onespaceproperty.com.au/sale/nsw/inner-west/erskineville/residential/apartment/8610190>



John (junjie) Zhu
0292678810

[For full version visit the website](https://www.onespaceproperty.com.au)



All information contained herein is gathered from all sources we believe to be reliable. However we cannot guarantee its accuracy and interested parties should rely on their own enquiries.



306/3 Eve Street, Erskineville