



2605/6 Ebsworth Street Zetland NSW

3 2 1

Experience elevated urban living in the iconic OVO by Mirvac, one of Green Square's most sought-after and architecturally celebrated addresses. Set high on Level 26, this remarkable three-bedroom sky residence enjoys uninterrupted north-facing views stretching across the Sydney CBD skyline, delivering a spectacular outlook that evolves beautifully from sunrise to the glittering city lights after dark.

Wrapped in floor-to-ceiling glazing, the home is immersed in natural light, revealing a refined composition of architectural precision and contemporary elegance. From the warmth of sunrise to the glittering skyline at dusk, the panoramic outlook becomes an ever-present feature of

[For full version visit the website](https://www.onespaceproperty.com.au)

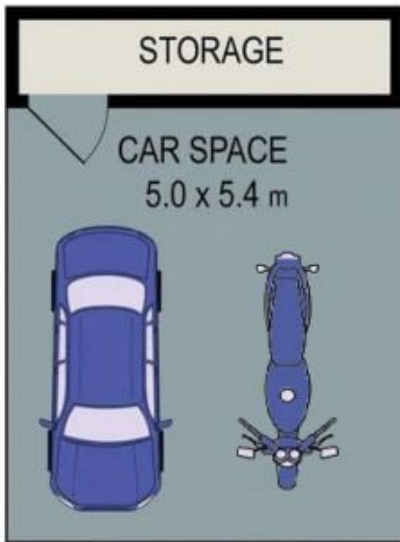
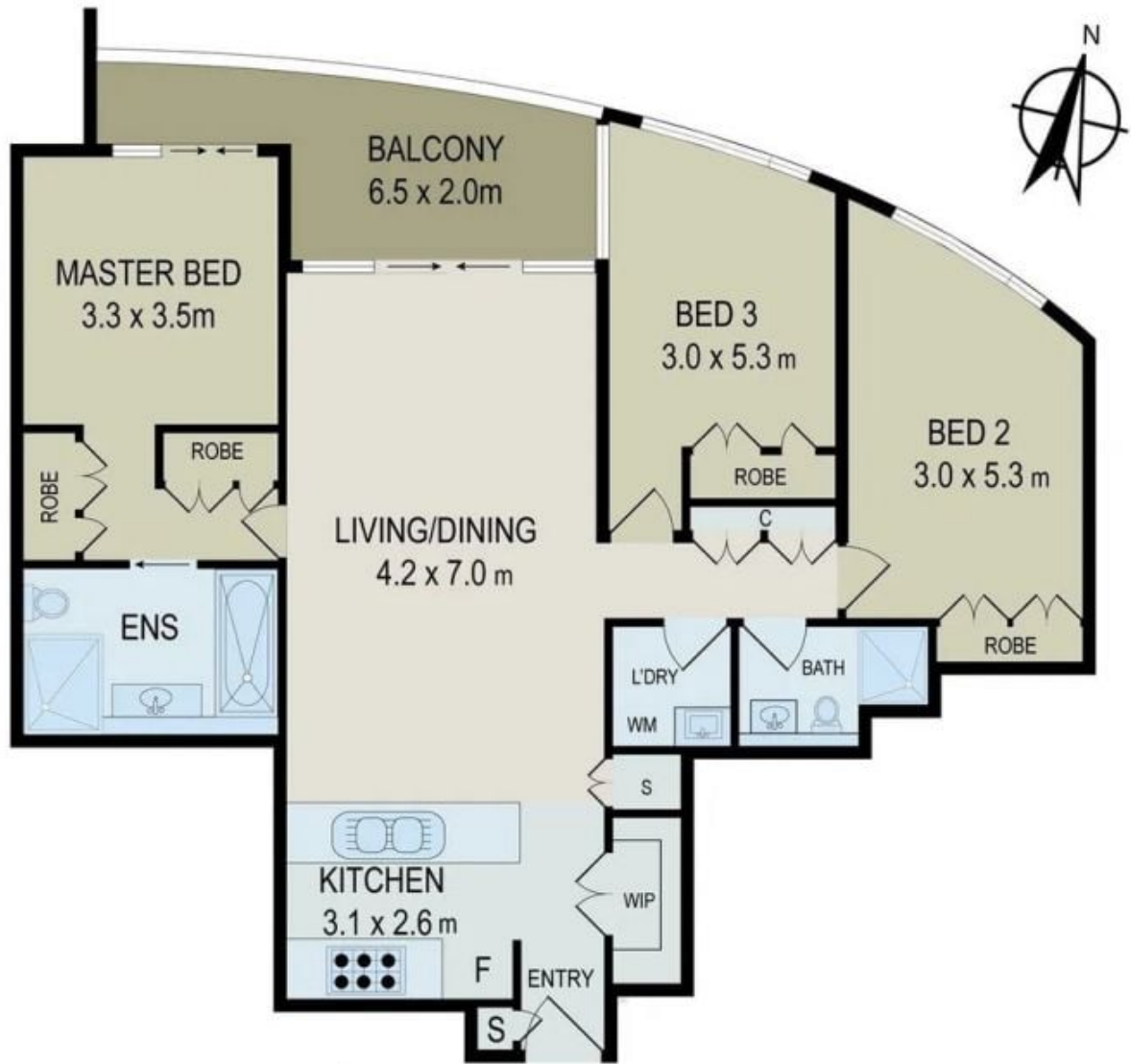
Type : Apartment

Price : \$2,050,000

View : <https://www.onespaceproperty.com.au/sale/nsw/eastern-suburbs/zetland/residential/apartment/8639084>



John (junjie) Zhu
0292678810



All information contained herein is gathered from all sources we believe to be reliable. However we cannot guarantee its accuracy and interested parties should rely on their own enquiries.

2605/6 Ebsworth Street, Zetland