



## 421/10 Half Street Wentworth Point NSW

1 1 1

Situated just 18 kilometres from Sydney's CBD, this modern one-bedroom apartment is located in the highly regarded "Savannah" complex by Sekisui House, offering a perfect balance of comfort, lifestyle and convenience. Residents enjoy resort-style facilities including a gym, indoor swimming pool, BBQ areas, elevated communal gardens and onsite concierge service.

**Type** : Apartment

**Price** : Contact Agent!!!

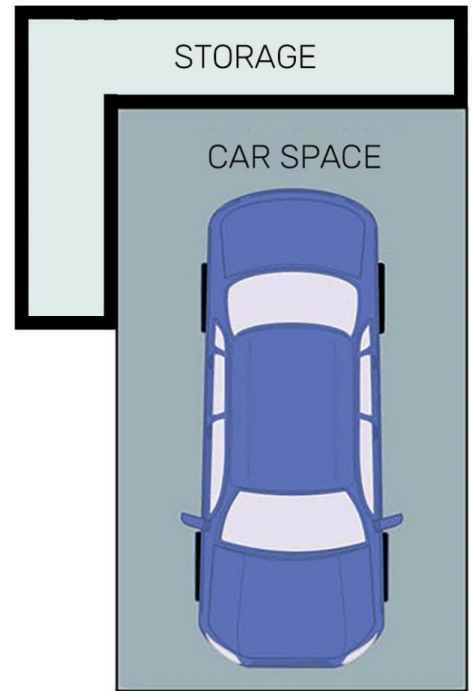
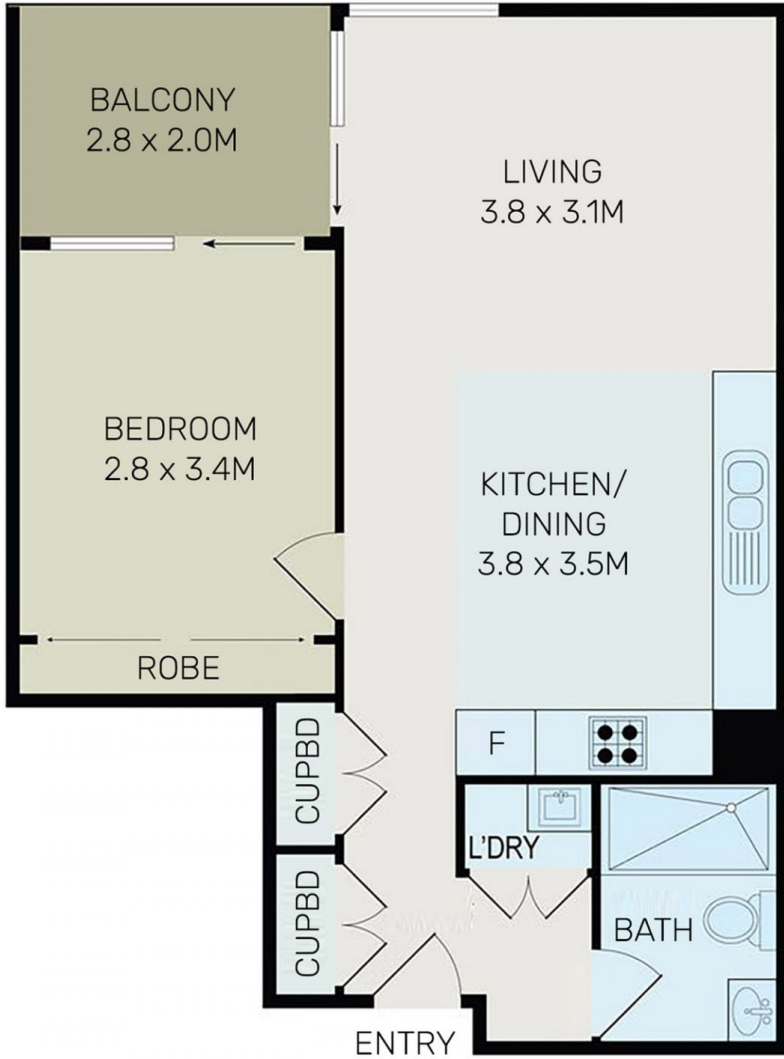
**View** : <https://www.onespaceproperty.com.au/sale/nsw/inner-west/wentworth-point/residential/apartment/8639090>

Surrounded by parklands and the tranquil shores of Homebush Bay, the apartment is just moments from Marina Square Shopping Centre, Wentworth Point Public School, cafés, restaurants, bus stops and the ferry wharf, while Bennelong Bridge provides easy access to Rhodes and Rhodes Train Station, delivering an ideal lifestyle for



**John (junjie) Zhu**  
0292678810

[For full version visit the website](https://www.onespaceproperty.com.au)



All information contained herein is gathered from all sources we believe to be reliable. However we cannot guarantee its accuracy and interested parties should rely on their own enquiries.



# 421/10 Half Street Wentworth Point