

**2602/591 George Street Sydney NSW**

2 🛏 2 🚿 1 🚗

Entry Via Eagar Lane (Off Sussex Street)

Immerse yourself in the pinnacle of urban elegance with this exquisite East facing 2- bedroom apartment, gracefully perched on the 26th floor of the illustrious 'Sun Tower.' Bathed in an abundance of natural light and offering beautiful city views, this fantastic apartment is a peaceful retreat amidst the energetic cityscape.

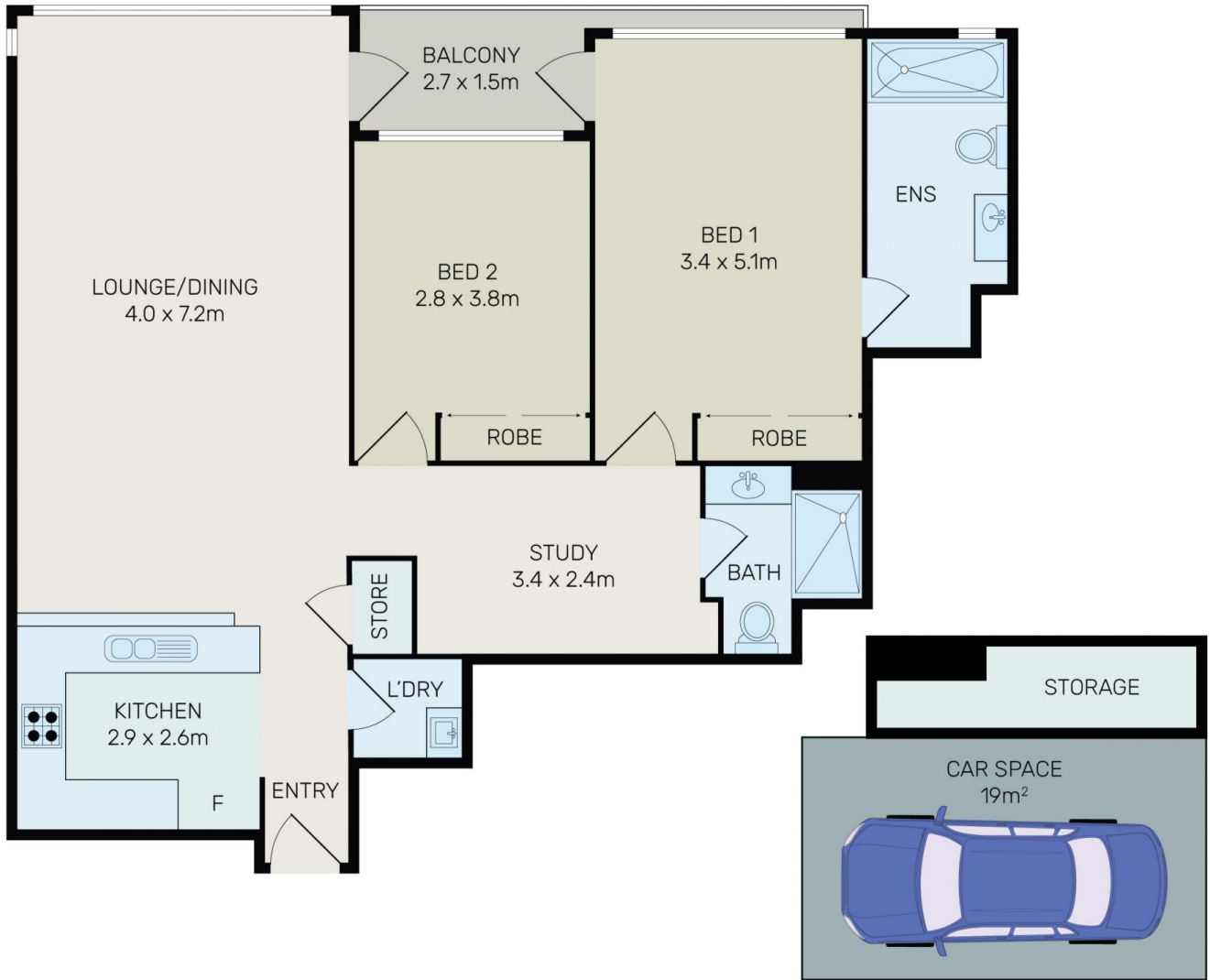
Discover the ultimate in urban living, with shopping precincts, renowned universities, Central Station, bus stops, Chinatown, and Darling Harbour all just moments away. Whether you seek the excitement of cosmopolitan living or the serenity of your own sanctuary, this apartment

[For full version visit the website](https://www.onespaceproperty.com.au)

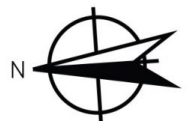
**Type** : Apartment  
**Price** : Just Listed | Entry Via Eagar Lane  
**Building Size** : 117 sqm  
**View** : <https://www.onespaceproperty.com.au/sale/nsw/sydney-city/sydney/residential/apartment/8682921>



**John (junjie) Zhu**  
0292678810



All information contained herein is gathered from all sources we believe to be reliable. However we cannot guarantee its accuracy and interested parties should rely on their own enquiries.



**2602/591 George Street, Sydney**