

1408/13 Verona Drive Wentworth Point NSW

2 2 1

Surrounded by parklands and embraced by the shores of Homebush Bay, this contemporary luxury 2-bedroom apartment has a mix of modern sophistication and the warm cosy comfort of a spacious home.

Located just footsteps from all the convenient lifestyle benefits Wentworth Point has to offer, this beautiful apartment is within walking distance to Marina Square Shopping Centre, Wentworth Point Public School, local shops, cafes, restaurants, bus stops, ferry wharf and Bennelong Bridge which provides a quick link to Rhodes.

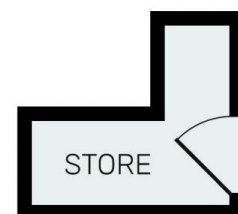
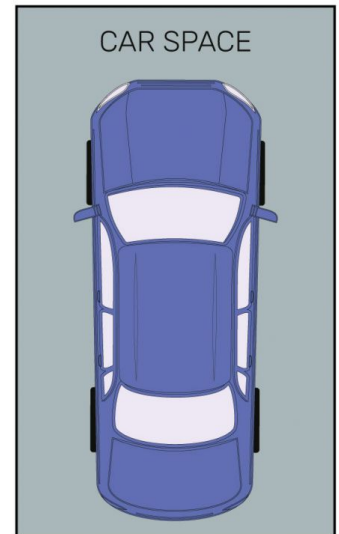
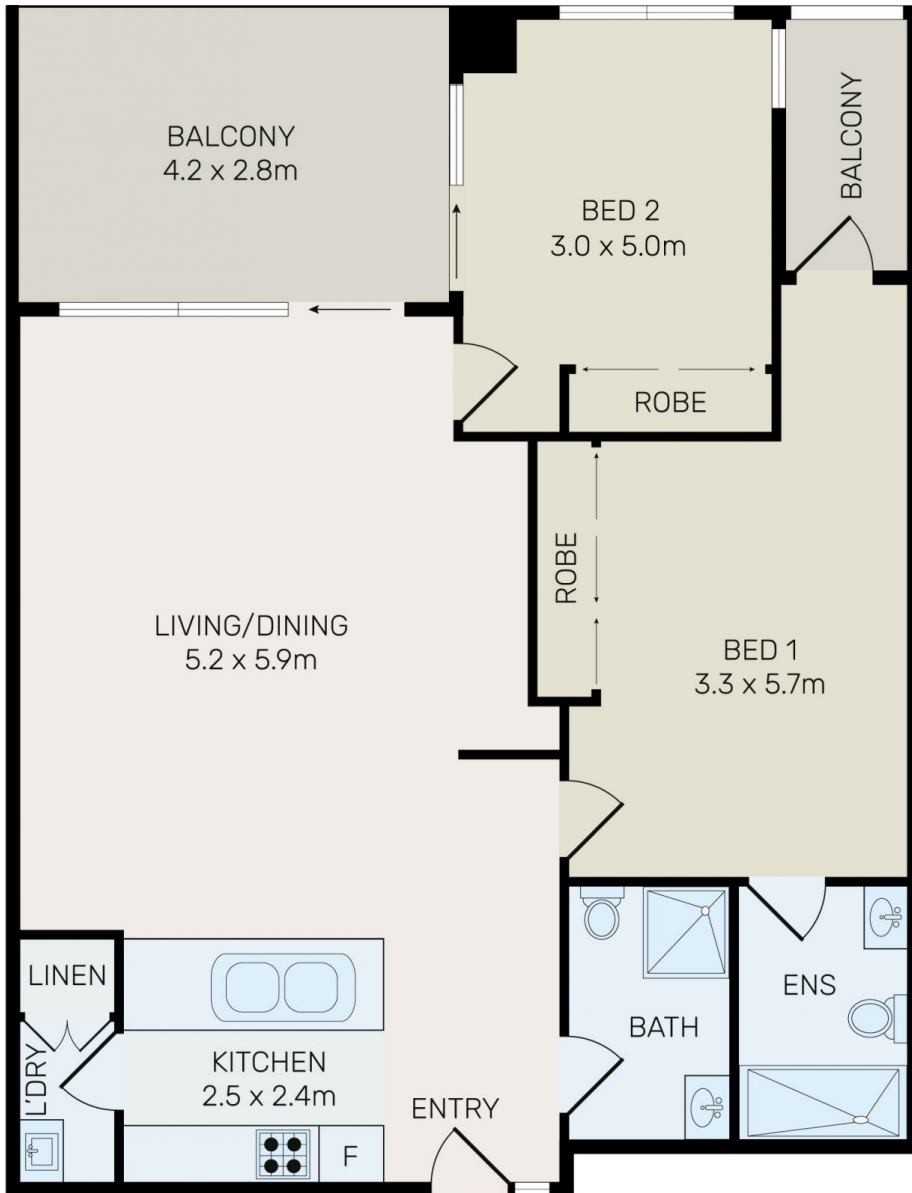
Positioned on level 14th, this Northwest facing 2-bedroom apartment is situated in the iconic "Savannah" complex

[For full version visit the website](https://www.onespaceproperty.com.au)

Type : Apartment
Price : Just Listed
Building Size : 107 sqm
View : <https://www.onespaceproperty.com.au/sale/nsw/inner-west/wentworth-point/residential/apartment/8698736>



John (junjie) Zhu
0292678810



All information contained herein is gathered from all sources we believe to be reliable. However we cannot guarantee its accuracy and interested parties should rely on their own enquiries.



1408/13 Verona Drive, Wentworth Point